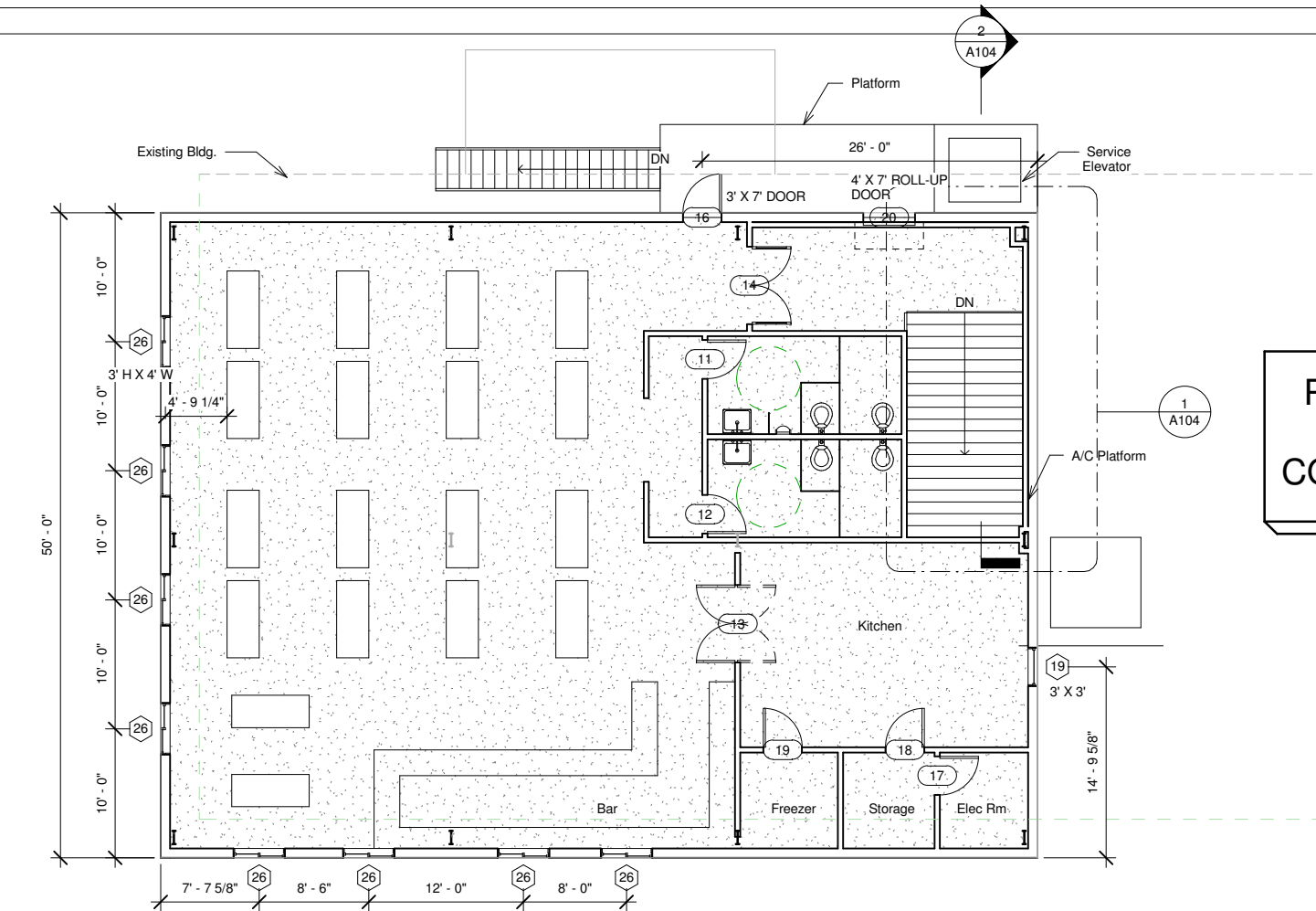


NOTES

1. WINDOW SEAL HEIGHT IS 42" ABOVE FINISH FLOOR.
2. WINDOW #26 IS A 3' H X 4' W SLIDER.
3. WINDOW #19 IS A 3' H X 3' W 1/1.

**PRELIMINARY
NOT FOR
CONSTRUCTION**



① Level 2
1/8" = 1'-0"

PATRICK GODWIN
200 GODWIN POINT
HEMPHILL, TEXAS 75948

ARCHITECT LICENSE #17302

Crystal Beach, Texas

No.	Description	Date

SECOND FLOOR PLAN

Project number Eagles Lodge
Date 1/28/10
Drawn by PKG
Checked by PKG

A102

Scale 1/8" = 1'-0"