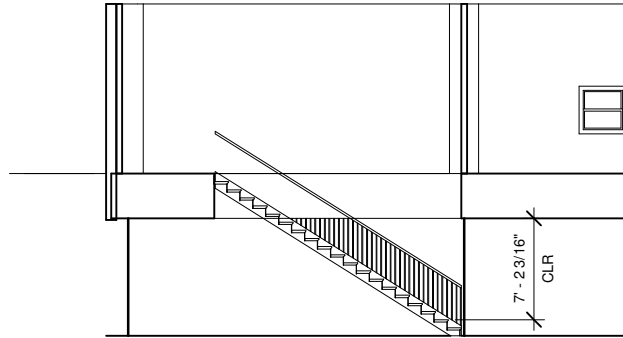


① Callout of Level 2
1/4" = 1'-0"



② Section 1
1/8" = 1'-0"

PATRICK GODWIN
200 GODWIN POINT
HEMPHILL, TEXAS 75948

ARCHITECT LICENSE #17302

Crystal Beach, Texas

No.	Description	Date

SECTIONS/DETAILS		
Project number	Eagles Lodge	A104
Date	1/28/10	
Drawn by	Author	Scale As indicated
Checked by	Checker	